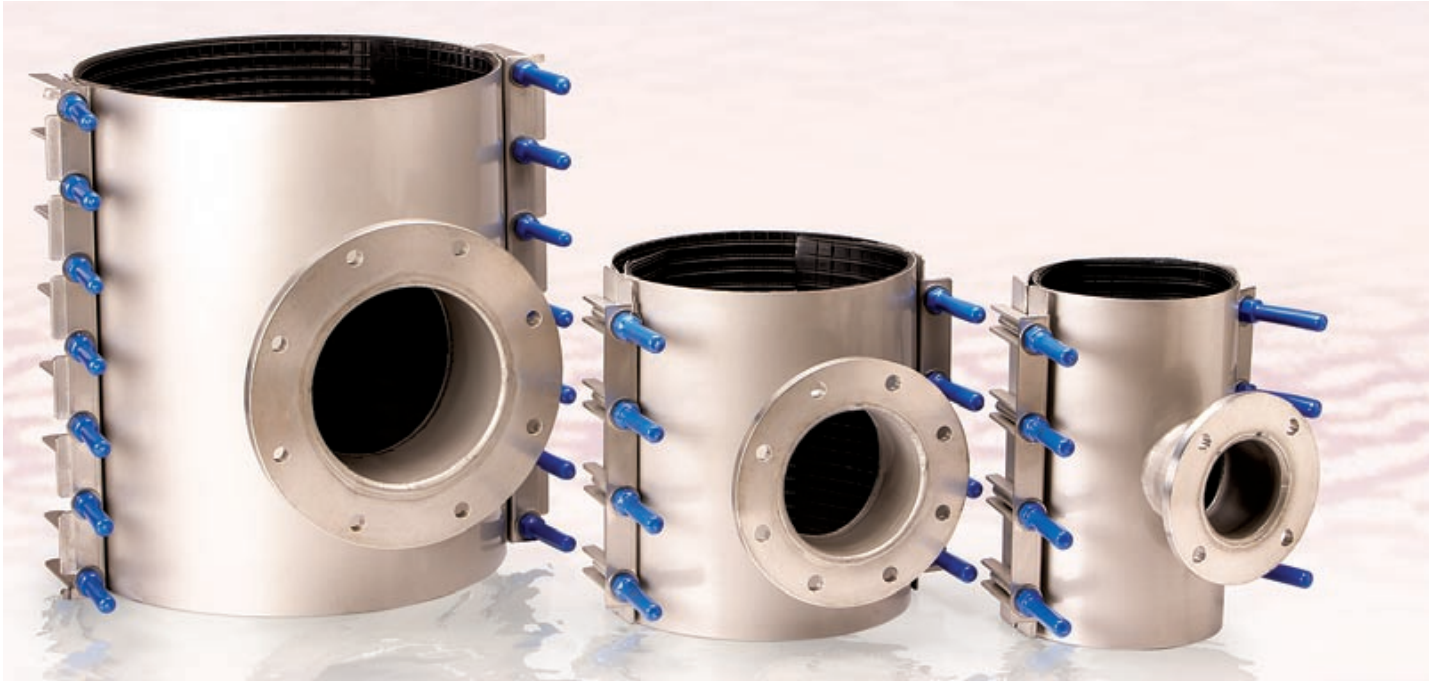


Flanged offtake clamps for 'T' connections onto new or existing mains. Ideal for tapping under pressure. Manufactured in accordance with AS 4181. DN 100 – DN 900.

WANG Flanged Offtake Clamps



- Flanged offtake clamps include a flanged 90 degree offtake for connection to valves and other flanged fittings.
- Allows a pipe to be tapped while under mains pressure, avoiding the need for water supply shut-off.
- Available for most pipe types and sizes.
- Able to adapt to pipe irregularities or ovality.
- Avoids the need to cut out sections of pipe, making time-consuming reconnections and supply shut-off's obsolete.
- Complete 316 stainless steel construction maximises performance life.

- Full-circle nitrile rubber gasket seal.
- Fully passivated.
- Plastic thread protectors.
- All rough surfaces finished to avoid harm to the installer.
- Molybond® coated fasteners to prevent galling.
- Manufactured in accordance with ISO 9001 quality standards.
- Dispatched with installation instructions.

General applications

A flanged offtake clamp is designed to provide a flanged connection off a new or existing pipeline. This clamp is ideal for tapping pipelines under pressure, or for hydrant and air valve installations on existing pipelines. The combination of quality materials and superior design allows this clamp to be utilised in a variety of applications and industries.

Technical data

Size range:

DN 100 – DN 900.

Offtake Sizes:

DN 80 – DN 300.

Maximum Operating Pressure:

1600 kPa (up to and including DN 450).

Flange drilling and Class options:

PN 16 to AS 4087 with Table C,D compatible drilling (AS 2129)

Temperature Range:

-10°C to 60°C.

Relevant Standards:

AS 4181.

Caution: The clamp should NOT be rotated after it is assembled around the pipe.

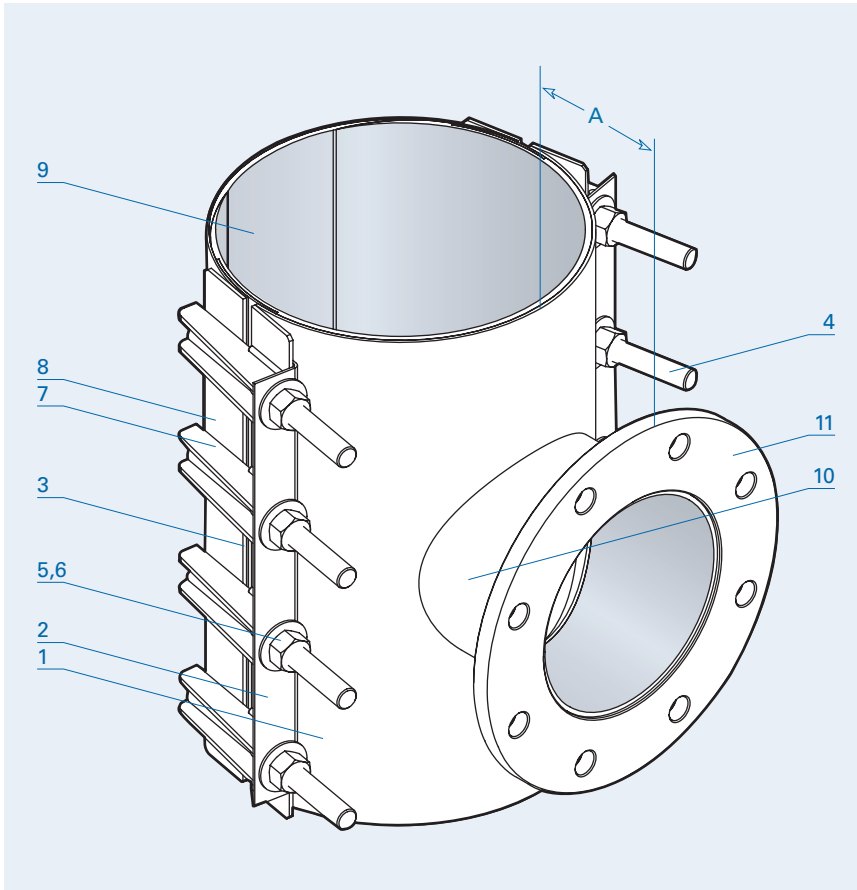
WANG stainless steel flanged offtake clamps parts list

No. Description / Material / Standard

1	Skin 316 Stainless Steel ASTM A240M
2	Locking Plate 316 Stainless Steel ASTM A240M
3	Bridge Plate 316 Stainless Steel bonded to gasket ASTM A240M
4	Studs 316 Stainless Steel ASTM A276
5	Nuts 316 Stainless Steel – Molybond coated AS 1112.1 or DIN 934
6	Washers 316 Stainless Steel ISO 7089
7	Lugs 316 Stainless Steel ASTM A276
8	Flats 316 Stainless Steel ASTM A276
9	Sealing Gasket Full-circle Nitrile (NBR) compound AS 1646 and AS/NZS 4020
10	Oftake Pipe 316 Stainless Steel ASTM A312M or ASME B36.19M
11	Oftake Flange 316 Stainless Steel ASTM A240M or A182, AS 4087

Notes

- For size-on-size tapplings, it is recommended to use the next lowest DN sized shell cutter, in accordance with WSAA Underpressure Tapping code of practice.
- Wang Flanged Offtake Clamps do not provide axial pipe restraint.



Standard clamp data

Nominal size DN	Oftake size mm	Clamp length mm	No. of bolts	No. of parts	No. of studs per part	Code prefix	Clamp OD range mm	PN rating
100 - 125	80, 100	400	8	2	4	K8	5	16
150 - 350	80, 100, 150	400	8	2	4	K8	10	16
375 - 450	80, 100, 150	400	10	2	5	K10	10	16
200 - 450	200, 225, 250	600	14	2	7	K14	10	16
300 - 450	300	800	20	2	10	K20	10	16

Other flange classes and drilling patterns may be available upon request.

Oftake dimensions

Flange Size	A mm
80 - 150	90
200 - 225	105
250 - 300	125

For additional product information visit:
www.tycowater.com.au/pipeline_components2