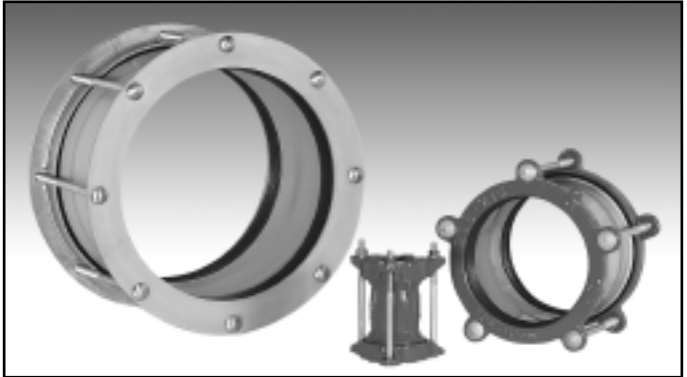


Installation Guide

WANG Vari-Gib Multi-Size Coupling



Initial Preparation Clean pipe surface and make it as smooth and free from corrosion and pitting as possible, for a distance of approximately 50mm greater than the area to be covered by the coupling.



Step 1

Place reference marks on both pipe ends to ensure later that the coupling is properly centred over the opening between the pipes.

Step 2

Loosen nuts but do not remove as in most instances it is not necessary to dismantle the coupling. Shake coupling to loosen parts. This should dislodge rubber gaskets from the flanges, if rubber gaskets are still bonded to the flanges remove and lubricate.

Important:

Rubber gasket slip surfaces are pre-lubricated, however they may need to be relubricated if storage conditions (eg. direct sunlight) have caused them to dry out.



Step 3

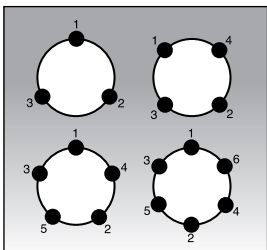
Slide assembled coupling over one pipe. Bring the other pipe into position. Using your reference mark (see step 1) check the coupling for correct positioning over the opening between the two pipe ends.



Step 4

Hand tighten all nuts. Continue to tighten each nut with small turns in the sequence shown until all nuts reach an even tension.

Important: Ensure the sleeve, gaskets and flanges are evenly centred around the pipe.



Step 5

After initial tightening of all the nuts (see step 4), repeat as many times as necessary to bring all bolts/studs to recommended torque as specified on the stainless steel sleeve of the coupling. For couplings with ductile iron sleeves a torque rating of 40 - 50Nm is required. Ensure coupling is centralised around pipe at all times.



Handy Hints: • Coupling can be assembled & partially tightened above ground.

- Ensure the side of the coupling where the nuts are, is on the side which has the smallest pipe OD.

Note: The basic design of bolted compression couplings does not provide for anchoring the pipe or coupling. Suitable anchorage must be provided when excessive pipe movement or pressure variation could cause the pipe to move out of the coupling or the coupling to move along the pipe.

Note: Ensure product installation complies with local authority requirements.

tyco
Water

ABN: 75 087 415 745

**TYCO WATER
-WANG COMPONENTS**

15 Nyadale Dr, Scoresby,
Vic. 3179, Australia.

Ph: (03) 9730 6100

Fax: (03) 9730 6101

E. & O.E.



F20: 70 R6 FEB 2005

TYCO Water terms and conditions of sale and warranty apply.