

tyco

Flow Control

Tyco Water

Features

- Ductile Iron components for high strength and impact resistance.
- Fasteners are grade 316 Stainless Steel for long life operation.
- Thrust type available to provide longitudinal restraint.
- Non-Thrust type available where restraint is separately provided.
- Cement lined and bitumen coated or fusion coated with Rilsan Nylon 11 for long life corrosion protection.
- Studs are fully threaded.

Dismantling joints are designed to facilitate the removal of flanged valves from pipelines.



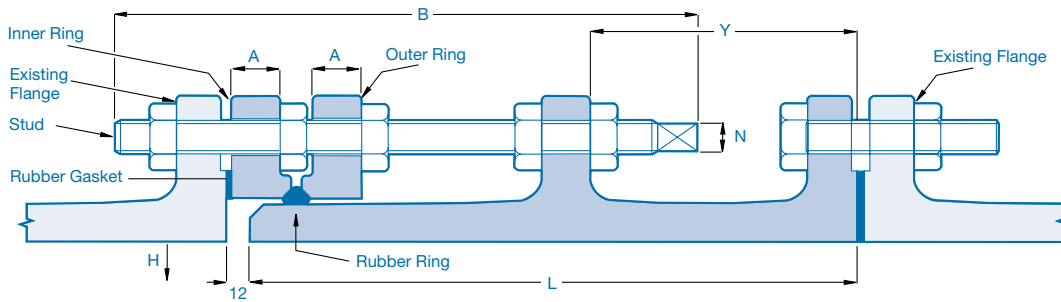
General Application

Dismantling Joints are used in pipelines where valves may need to be removed for future maintenance or replacement.

Technical Data

Size Range:
DN100-DN750
Allowable Operating Pressure:
1600 kPa or 3500 kPa
End Connections:
Flanged to AS 4087 Figure B5
Flanged to AS 4087 Figure B6

Thrust Type



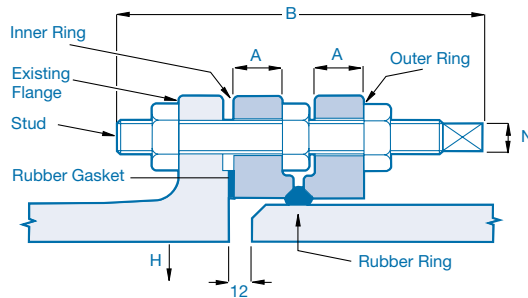
Class 16 - Thrust Type Dismantling Joint Dimensions

Nominal Size DN	Joint Dimensions				Rubber ID x d	No. of Studs	Stud Details			No. of Nuts
	A	H	L	Y			Stud Size	B	Z	
100	30	126	400	175	104 x 16	4	M16	340	10	5
150	30	181	400	175	155 x 16	8	M16	340	10	5
200	30	236	400	175	206 x 16	8	M16	340	10	5
225	30	263	400	175	232 x 19	8	M16	340	10	5
250	30	290	400	175	268 x 19	8	M20	340	13	5
300	30	349	400	175	298 x 13	12	M20	340	13	5
375	35	430	600	260	410 x 13	12	M24	495	16	5
450	35	511	600	260	500 x 20	12	M24	495	16	5
500	40	564	600	260	555 x 20	16	M24	495	16	5
600	45	671	600	260	660 x 20	16	M27	495	16	5
750	47	831	600	260	780 x 25	20	M30	495	18	5

Class 35 - Thrust Type Dismantling Joint Dimensions

Nominal Size DN	Joint Dimensions				Rubber ID x d	No. of Studs	Stud Details			No. of Nuts
	A	H	L	Y			Stud Size	B	Z	
100	30	126	400	175	104 x 16	8	M16	340	10	5
150	30	181	400	175	155 x 16	12	M20	340	13	5
200	31	236	400	175	206 x 16	12	M20	340	13	5
225	34	263	500	220	232 x 19	12	M24	425	16	5
250	34	290	500	220	268 x 19	12	M24	425	16	5
300	38	349	500	220	298 x 19	16	M24	425	16	5
375	42	430	600	260	410 x 24	16	M27	495	16	5
450	46	511	600	260	500 x 20	20	M30	495	18	5
500	49	564	600	260	555 x 20	24	M30	495	18	5
600	54	671	700	300	660 x 20	24	M33	595	20	5
750	59	831	700	300	780 x 25	28	M33	595	20	5

Non-thrust Type



Class 16 - Non Thrust Type Dismantling Joint Dimensions

Nominal Size DN	Joint Dimensions		Rubber ID x d	No. of Studs	Stud Details			No. of Nuts
	A	H			Stud Size	C	Z	
100	30	126	104 x 16	4	M16	195	10	3
150	30	181	155 x 16	8	M16	195	10	3
200	30	236	206 x 16	8	M16	195	10	3
225	30	263	232 x 19	8	M16	195	10	3
250	30	290	268 x 19	8	M20	195	13	3
300	30	349	298 x 13	12	M20	195	13	3
375	35	430	410 x 13	12	M24	275	16	3
450	35	511	500 x 20	12	M24	275	16	3
500	40	564	555 x 20	16	M24	275	16	3
600	45	671	660 x 20	16	M27	275	16	3
750	47	831	780 x 25	20	M30	275	18	3

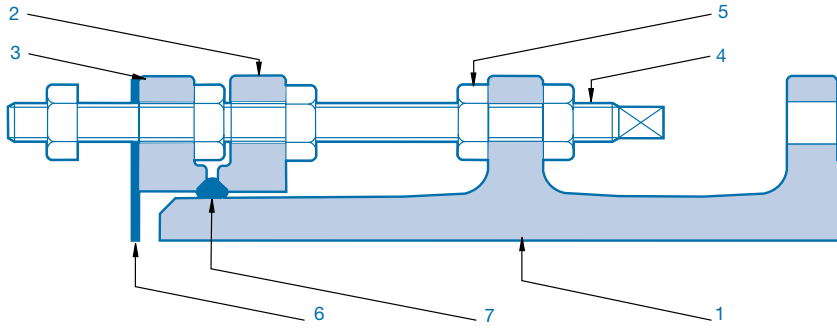
Class 35 - Non Thrust Type Dismantling Joint Dimensions

Nominal Size DN	Joint Dimensions		Rubber ID x d	No. of Studs	Stud Details			No. of Nuts
	A	H			Stud Size	C	Z	
100	30	126	104 x 16	8	M16	195	10	3
150	30	181	155 x 16	12	M20	195	13	3
200	31	236	206 x 16	12	M20	195	13	3
225	34	263	232 x 19	12	M24	275	16	3
250	34	290	268 x 19	12	M24	275	16	3
300	38	349	298 x 19	16	M24	275	16	3
375	42	430	410 x 24	16	M27	275	16	3
450	46	511	500 x 20	20	M30	275	18	3
500	49	564	555 x 20	24	M30	275	18	3
600	54	671	660 x 20	24	M33	330	20	3
750	59	831	780 x 25	28	M33	330	20	3

Note: When non-thrust dismantling joints are used on non machined DI pipe spigots, the allowable operating pressure is 2100kPa

Dismantling Joints

DN100-DN750



Parts List

No.	Description	Material	Standard
1	Body (Thrust type only)	Ductile Iron	AS 1831-400/15
2	Thrust Ring Inner	Ductile Iron	AS 1831-400/15
3	Thrust Ring Outer	Ductile Iron	AS 1831-400/15
4	Stud	Stainless steel	ASTM A276 316
5	Nut	Stainless steel	ASTM A276 316
6	Gasket	EPDM Rubber (Class 16) Teadit NA1000 (Class 35)	AS 1646 -
7	Rubber Ring	EPDM Rubber	AS 1646

Specifying Sequence

Specifying a non-thrust type DN300 Class 16 dismantling joint.

Example	300	DIS JNT	N-THRUST	S/S	TC	FC
Nominal Size	100 - 750					
Name						
Type	Thrust Non thrust					
Fastener Type	SS - Stainless Steel					
End Type	TC - Flanged AS 4087 Figure B5 HP - Flanged AS 4087 Figure B6					
Extra Information	FC - Fusion Coated DI - Ductile Iron DICL - Ductile Iron Cement Lined					