



Figure 400 metal seated gate valves are designed and manufactured to AS 2638.1

Features

- Ductile Iron body and bonnet for high strength and impact resistance.
- Solid gunmetal gate for DN80-DN200, ductile iron fusion coated gate with gunmetal rings for larger sizes.
- Grade 431 Stainless Steel spindle for high strength and corrosion resistance.
- Gunmetal dezincification resistant top casting incorporating dual O-ring seals and wiper ring for long life operation.
- Back seal facility to allow for replacement of seals under full operating pressure.
- Thermally bonded polymeric coating for long life corrosion protection.
- Isolated fasteners for corrosion protection.
- Anti-friction thrust washer for low operating torques.
- Integral cast in feet for safe and easy storage.
- Integral lifting lugs for installation convenience.
- Anticlockwise closing or clockwise closing available.
- Key, handwheel or gearbox operation available.



General Application

Figure 400 metal seated gate valves are suitable for use with drinking water and waste water, in below or above ground applications. Used for the isolation of sections and branches in pipelines.

Technical Data

Size Range: DN80-DN900

Allowable Operating Pressure: 1600 kPa or 3500 kPa

Maximum Temperature: 40°C

End Connections:

Flanged to AS 4087 Fig B5 or B6
TYTON® Socket

Certifications:

WSAA Appraisal No. 02/07

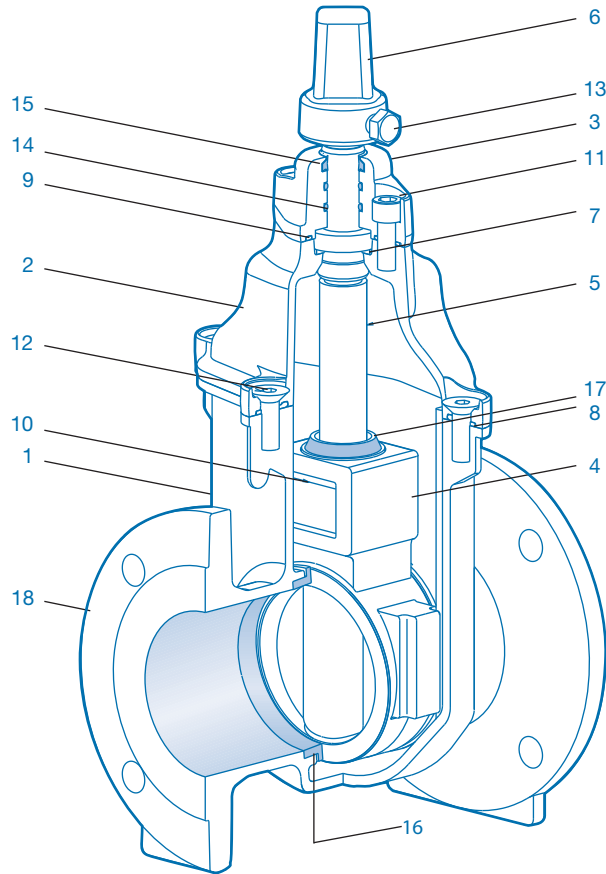
ISC AS 2638 Certified Product

License No. PRD/R61/0412/2
(DN80-DN750)

Certified to AS 4020 - suitable for contact with drinking water.

Metal Seated Gate Valves - Figure 400

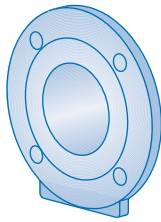
DN80 - DN900



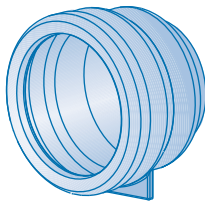
Parts List

No	Description	Material	Standard
1	Body	Ductile Iron	AS 1831 400-15
2	Bonnet	Ductile Iron	AS 1831 400-15
3	Seal Retainer	Gunmetal	AS 1565 C83600
4	Gate	DN80-DN200 Gunmetal DN225-DN900 Ductile Iron	AS 1565 C83600 AS 1831 400-15
5	Spindle	Stainless Steel	ASTM A 276 431
6	Spindle Cap	Ductile Iron	AS 1831 400-15
7	Thrust Washer	Acetal	-
8	Body Gasket	EPDM	AS 1646
9	Bonnet Gasket	EPDM	AS 1646
10	Gate Nut	Gunmetal	AS 1565 C83600
11	Socket Head Screws	High Tensile Alloy Steel	-
12	Countersunk Screws	High Tensile Alloy Steel	-
13	Hex Head Screw	Stainless Steel	ASTM A276 316
14	O-Rings	Nitrile Rubber	AS 1646
15	Wiper Ring	Nitrile Rubber	AS 1646
16	Seat Rings	Gunmetal	AS 1565 C83600
17	Backseal Grommet	Nitrile Rubber	AS 1646
18	Polymeric Coating	-	AS/NZS 4158

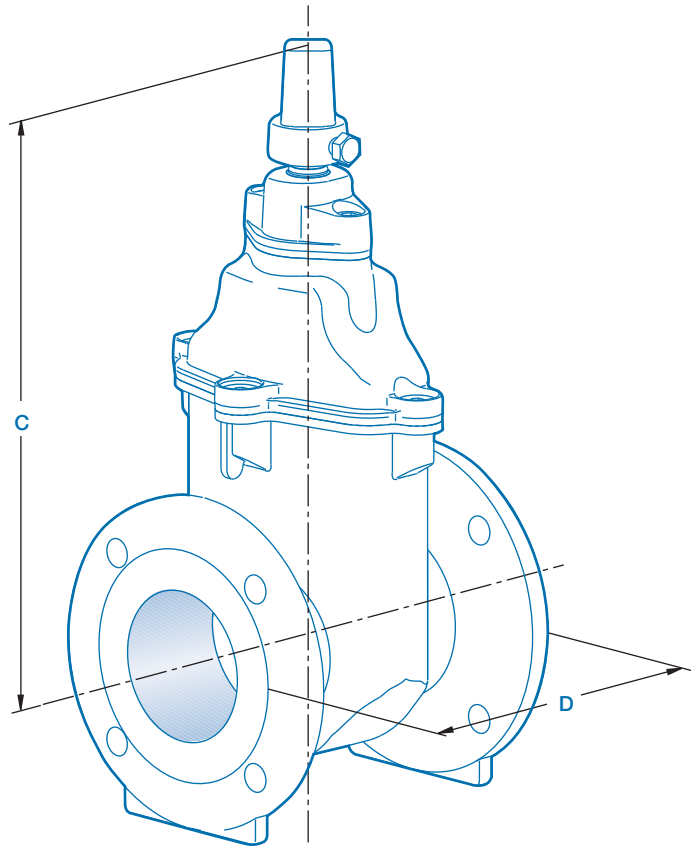
End Connections



Flange



Socket



Dimensions (mm)

Valve Size	C	D		Turns to Close	Approx. Mass kg
		PN 16 TYTON Socket	PN 35 Flange AS4087 Fig B5		
80	367	-	203	20	18
100	402	150	229	23	24
150	502	170	267	26	43
200	610	195	292	34	75
225	649	205	305	38	85
250	723	235	330	42	110
300	810	245	356	50	160
375	960	275	381	62	340
450	1145	-	432	76	560
500	1290	-	457	82	710
600	1467	-	508	98	940
750	2255	-	610	62	2700
900	2550	-	711	74	3500

Note:

For compatibility with Series 1 PVC (white) pipe, PLASTYT gaskets may be used in TYTON sockets.

Metal Seated Gate Valves - Figure 400

DN80 - DN900

Available Range

DN	Metal Seated Gate Valves			PN 35 FI-FI
	Inside Screw			
	FI-FI	PN 16 Sc-Sc		
80	✓			✓
100	✓		✓	✓
150	✓		✓	✓
200	✓		✓	✓
225	✓		✓	✓
250	✓		✓	✓
300	✓			✓
375	✓			
450	✓			✓
500	✓			✓
600	✓			✓
750	✓			✓
900	✓			PN25
Fig No.	400		400	400
Coating				
Polymeric Coating	✓		✓	✓
Options				
Anticlockwise Closing	✓		✓	✓
Clockwise Closing	✓		✓	✓
Gear Actuator	✓			✓
Flange Drilling Fig B5 (TC)	✓			
Flange Drilling Fig B6 (HP)				✓

Recommended Specification

- Gate valves shall be metal seated conforming to AS2638.1.
- The allowable operating pressure shall be 1600 kPa/3500 kPa.
- Operation shall be by means of a key/handwheel.
- The direction of closing shall be anticlockwise/clockwise.
- The valve body and bonnet shall be cast in Ductile Iron and coated with a thermally applied polymeric coating to AS/NZS 4158.
- The gate shall be cast in Ductile Iron and coated with a thermally bonded polymeric coating. Gate sealing rings shall be dezincification resistant copper alloy mechanically fixed to the body and gate. Solid gunmetal gates are also acceptable.
- The spindle shall be Grade 431 Stainless Steel incorporating a failsafe thrust collar.
- The spindle seal retainer shall be manufactured from a dezincification resistant copper alloy to AS1565.
- The spindle seal shall be affected by a minimum of two O-rings, which can be replaced under full operating pressure.
- Fasteners shall be completely isolated from the external environment.
- Valves shall be manufactured under a product certification scheme and each valve marked in accordance with the certification body's requirements.